



New-Way Weedspray NON-SELECTIVE HERBICIDE FOR AMENITY AND INDUSTRIAL WEED AND MOSS CONTROL ON HARD SURFACES AND OTHER AMENITY AREAS. PCS No. 05603

USE PLANT PROTECTION PRODUCTS SAFELY. ALWAYS READ THE LABEL AND PRODUCT INFORMATION BEFORE USE.

- ✓ Approved for moss control on hard surfaces
- ✓ Fast acting - weeds die 1 to 2 days after treatment
- ✓ Formulated from naturally occurring ingredients
- ✓ Contains acetic acid. One of only two foliar acting herbicides approved on hard surfaces
- ✓ Ideal as a rotation partner with glyphosate to avoid potential weed resistance on hard surfaces
- ✓ Pack Size: 5L



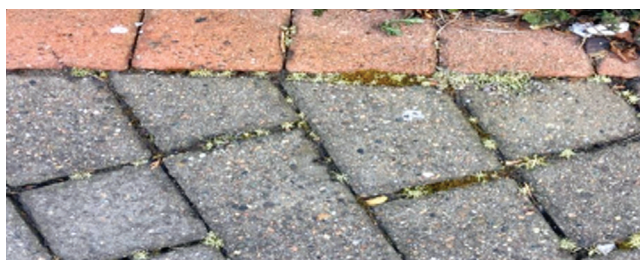
New-Way Weedspray is a non-selective herbicide based on naturally occurring ingredients. The active ingredient – acetic acid (vinegar) has been formulated from the highest food-grade product and developed with a naturally occurring protein ingredient which literally doubles the herbicidal properties of acetic acid compared to standard products.

What is it? New-Way Weedspray contains 240g/litre acetic acid formulated with a naturally occurring activator - NWS Booster. Acetic acid (vinegar) occurs naturally through the fermentation process and breaks down to water in the ground.



How does it work? New-Way Weedspray is a fast-acting, non-selective herbicide which is active against most soft tissue it comes into contact with. It controls grasses, broad-leaved weeds and mosses. The product produces discolouration and browning of the foliage within a few hours of treatment. Perennial weeds generally require more than one application for control but annual weeds are usually controlled with one treatment.

Areas of use: New-Way Weedspray can be used to control weed growth in amenity situations such as footpaths and pavements, parks, around trees, shrubs and hedges and in industrial areas such as railways, industrial sites and fence lines etc. It is also approved for moss control on hard surfaces.



Unlike other moss killers for hard surfaces, New-Way Weedspray will also control weeds and grass, eliminating the need for a separate application.



Application: Apply the spray so that leaves and stems are fully wetted before run-off. As the product works by contact action it is important that the weed is fully covered otherwise there will be partial control. The product is not translocated within the plant and therefore is safer to use around trees, shrubs and other valuable plants.

Mixing: Mix 1 part New-Way Weedspray to 3 parts of clean water. For example in a 16 litre knapsack sprayer mix 4 litres of New-Way Weedspray to 12 litres of water in the following manner. Half fill spray tank with clean water. Add the required amount of New-Way Weedspray. Fill the tank with more clean water to the required level. Agitate before use.

Weather: The product can be **used all year round**. Applications made in the cooler months will take longer to work. In warm, sunny weather, most weeds will die within 1 to 2 days. Apply the product on a dry day. Rain, soon after spraying, may wash spray off foliage leading to poor results.

Subsequent planting: As there are no residual effects with the product in the soil, sowing and planting may be undertaken as soon as the weeds have died.

Moss control on artificial sports surfaces



Artificial grass tennis court covered in moss



Artificial grass tennis court with moss removed

As well as moss and weed control on paths and other hard areas, New-Way Weedspray can be used to treat artificial sports surfaces. As there are a wide variety of materials employed for this use, always test on a small area to confirm the suitability of NewWay Weedspray before applying to the entire playing surface.

New-Way Weedspray will control weeds and grass as well, eliminating the need for a separate application.

